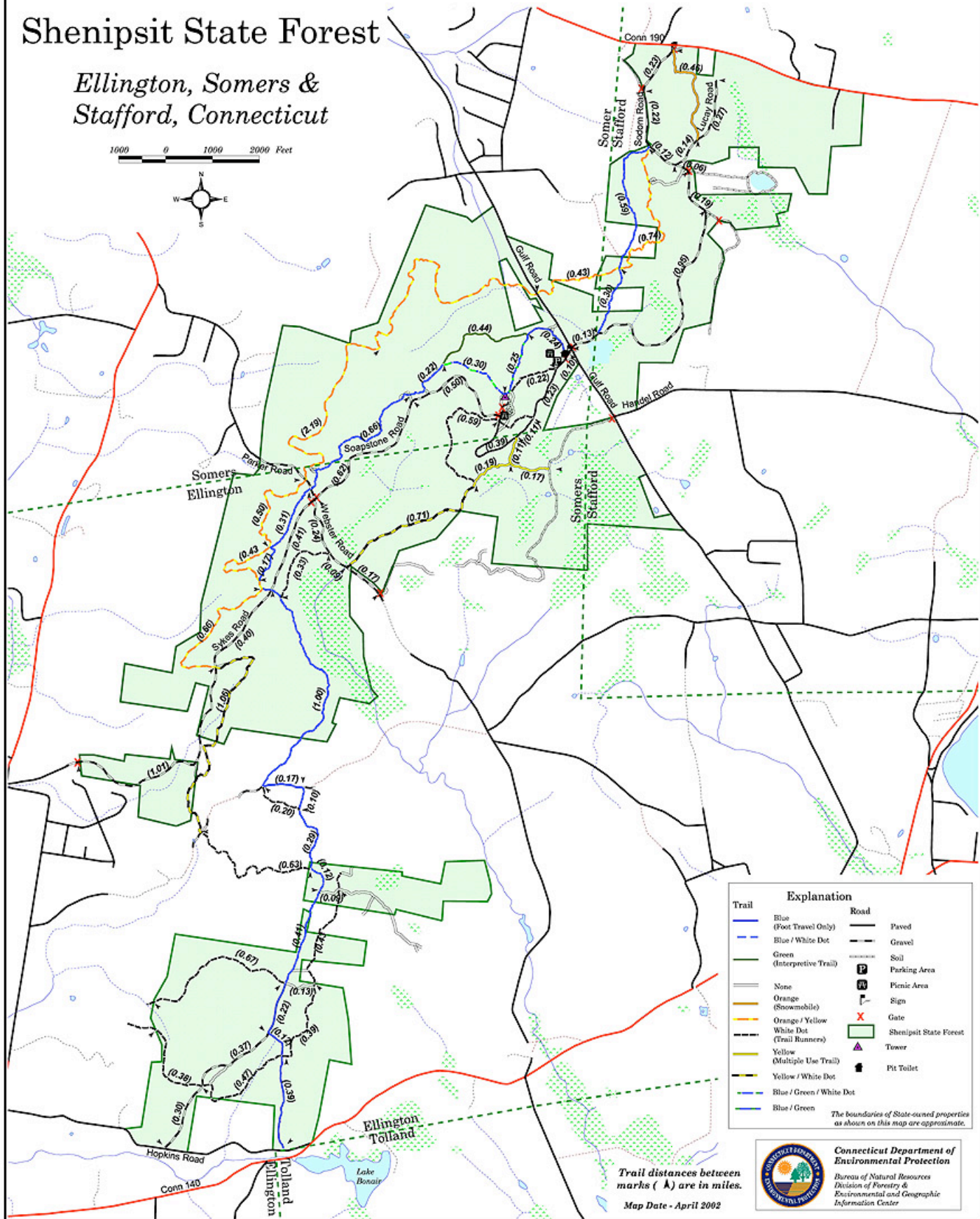


Shenipsit State Forest

Ellington, Somers & Stafford, Connecticut

1000 0 1000 2000 Feet



Explanation	
Trail	Road
Blue (Foot Travel Only)	— Paved
Blue / White Dot	— Gravel
Green (Interpretive Trail)	— Soil
None	— Parking Area
Orange (Snowmobile)	— Sign
Orange / Yellow (Trail Runners)	— Gate
White Dot (Multiple Use Trail)	— Shenipsit State Forest
Yellow / White Dot	— Tower
Blue / Green / White Dot	— Pit Toilet
Blue / Green	

The boundaries of State-owned properties as shown on this map are approximate.

Trail distances between marks (▲) are in miles.
Map Date - April 2002

