

FORIS VINEYARDS WINERY

ROGUE VALLEY APPELLATION

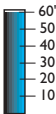
OREGON

Situated at a higher elevation than the other winegrowing areas of Oregon, the Rogue Valley appellation is comprised of several distinct growing climates. The western boundary of the district is just 25 miles from the Pacific Ocean. Rainfall within the region diminishes from west to east and increases with elevation, with only about 15% occurring during the grape growing season, early April to late October. In comparison to Oregon's other winegrowing appellations the days are hotter, nights cooler and the varieties grown more diverse.

ILLINOIS RIVER VALLEY

The westernmost and coolest valley, suited to growing cooler climate varieties: Pinot Noir, Gewurztraminer, Pinot Gris, Chardonnay, Pinot Blanc, Early Muscat, Gamay Noir.

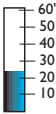
Annual Rainfall



APPLEGATE RIVER VALLEY

This valley is drier and warmer than the Illinois Valley and is presently planted to: Merlot, Cabernet Sauvignon, Chardonnay, Zinfandel.

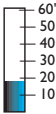
Annual Rainfall



BEAR CREEK VALLEY

The warmest area within the appellation, widely planted to pears, is highly suited to warmer climate grape varieties. Commercial plantings include: Merlot, Cabernet Sauvignon, Chardonnay, Cabernet Franc, Pinot Gris, Sauvignon Blanc, Malbec, Syrah.

Annual Rainfall

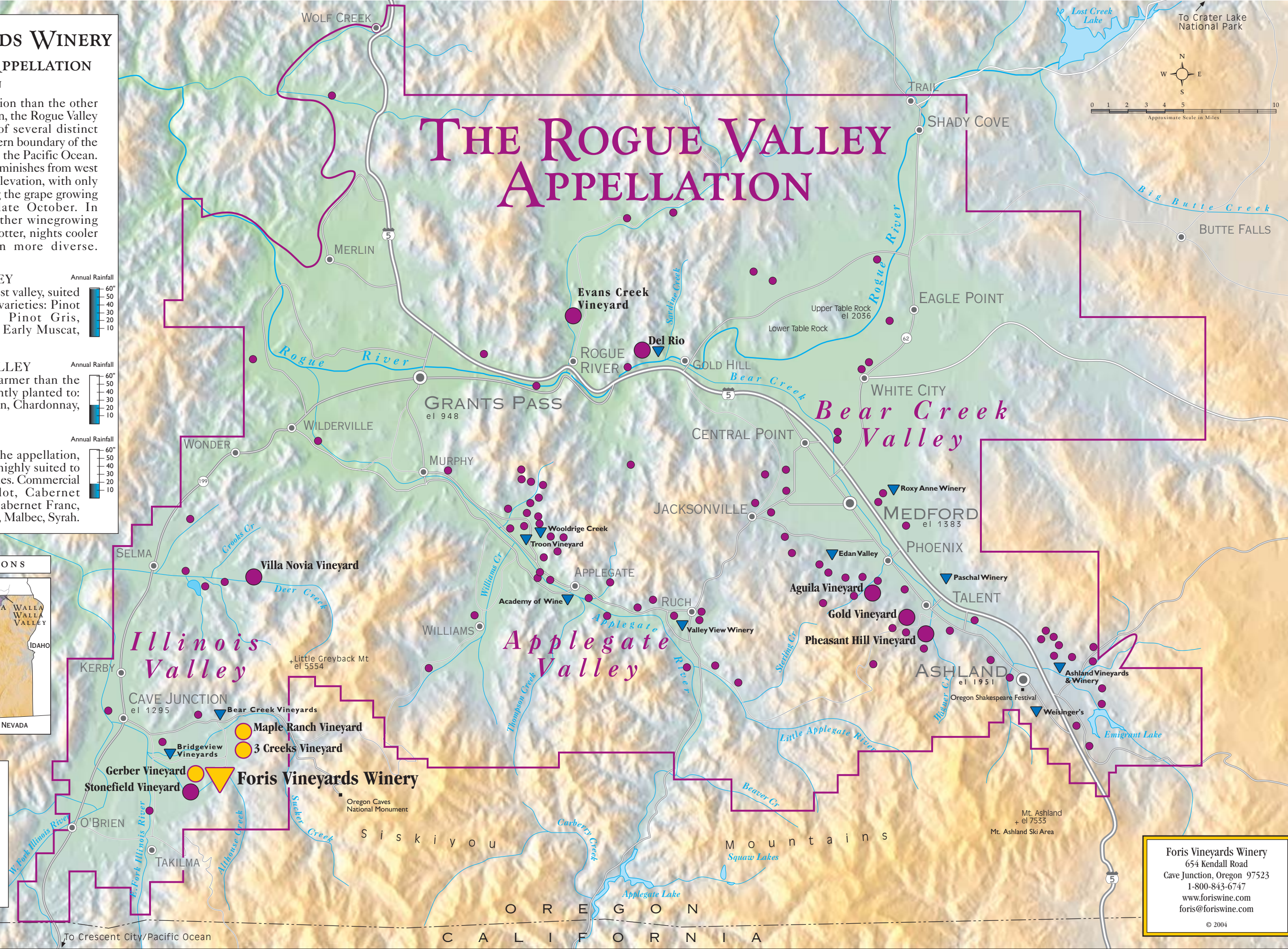
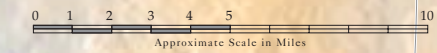


OREGON APPELLATIONS



- Foris Winery
- Foris Estate Vineyards
- Vineyards supplying grapes to Foris
- Other Wineries
- Other Vineyards
- Appellation Boundary

THE ROGUE VALLEY APPELLATION



Foris Vineyards Winery
 654 Kendall Road
 Cave Junction, Oregon 97523
 1-800-843-6747
 www.foriswine.com
 foris@foriswine.com
 © 2004