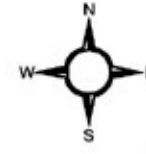
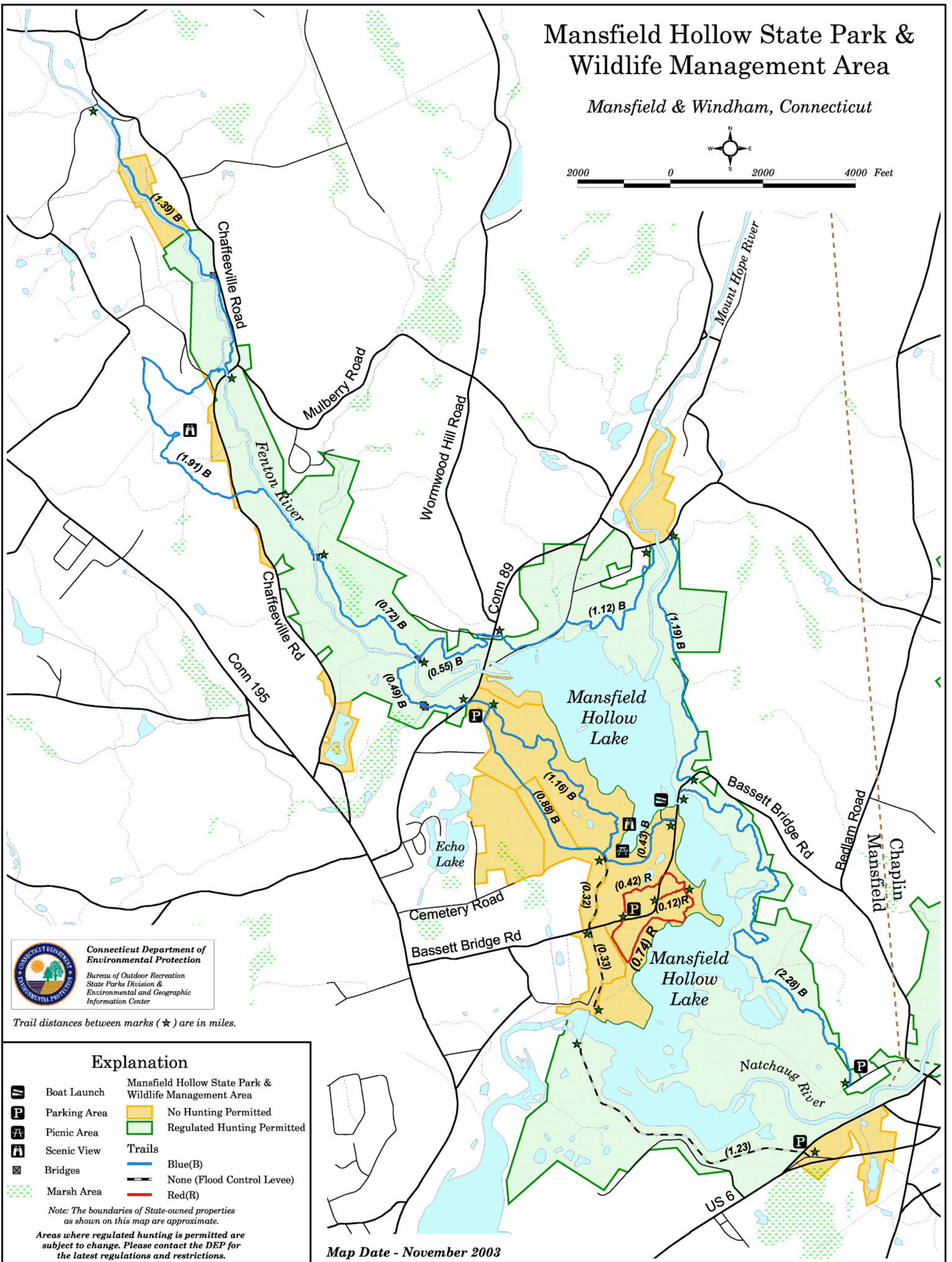


Mansfield Hollow State Park & Wildlife Management Area

Mansfield & Windham, Connecticut



2000 0 2000 4000 Feet



Connecticut Department of Environmental Protection

Bureau of Outdoor Recreation
State Parks Division &
Environmental and Geographic
Information Center

Trail distances between marks (★) are in miles.

Explanation

- | | | | |
|--|--------------|--|--|
| | Boat Launch | | Mansfield Hollow State Park & Wildlife Management Area |
| | Parking Area | | No Hunting Permitted |
| | Picnic Area | | Regulated Hunting Permitted |
| | Scenic View | | Blue(B) |
| | Bridges | | None (Flood Control Levee) |
| | Marsh Area | | Red(R) |

Note: The boundaries of State-owned properties as shown on this map are approximate.

Areas where regulated hunting is permitted are subject to change. Please contact the DEP for the latest regulations and restrictions.

Map Date - November 2003