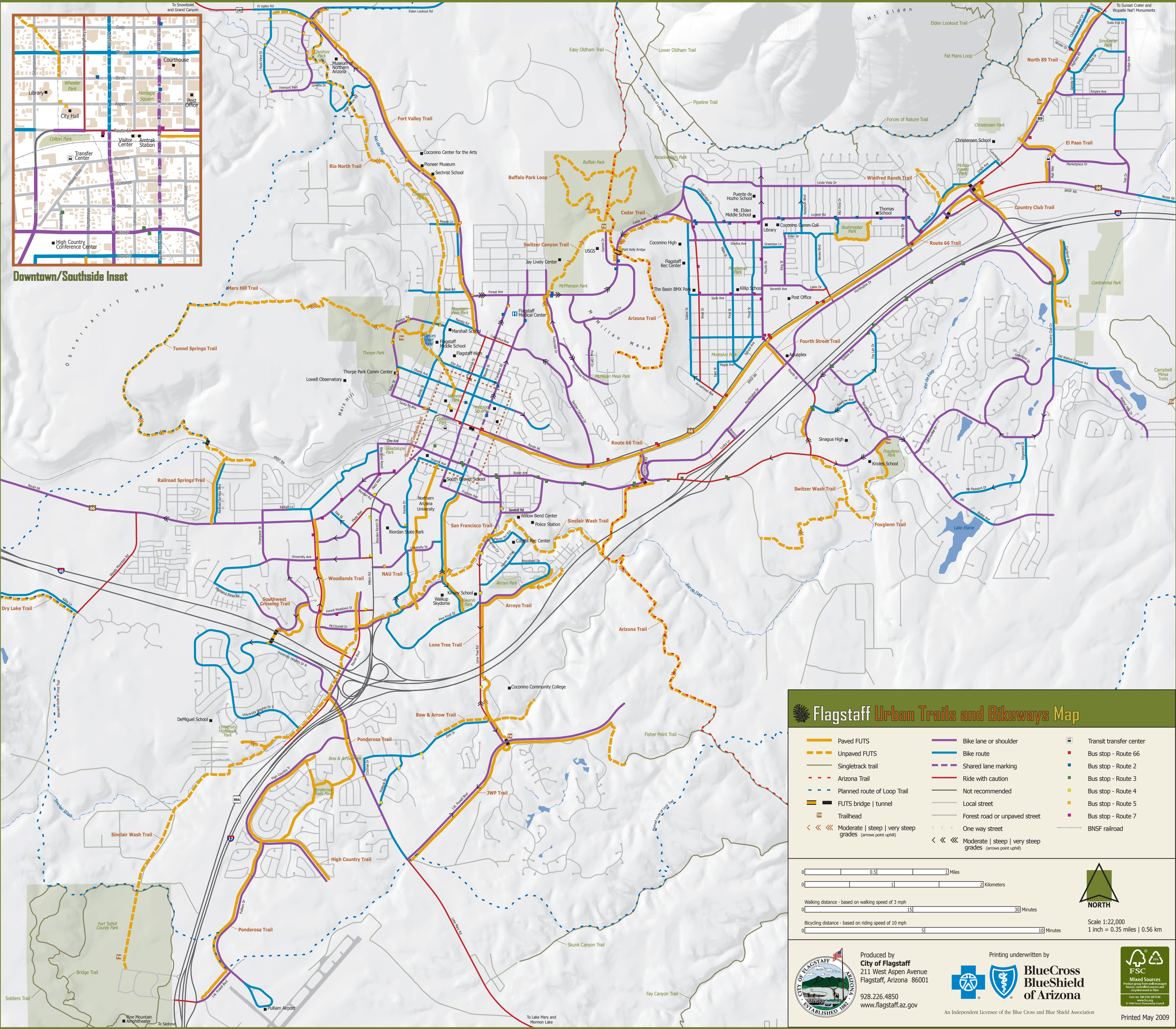




Downtown/Southside Inset



Flagstaff Urban Trails and Bikeways Map

<ul style="list-style-type: none"> — Paved FUTS — Unpaved FUTS — Singletrack trail — Arizona Trail — Planned route of Loop Trail — FUTS bridge tunnel — Trailhead — Moderate steep very steep grades (arrows point uphill) 	<ul style="list-style-type: none"> — Bike lane or shoulder — Bike route — Shared lane marking — Ride with caution — Not recommended — Local street — Forest road or unpaved street — One way street — Moderate steep very steep grades (arrows point uphill) 	<ul style="list-style-type: none"> T Transit transfer center ■ Bus stop - Route 66 ■ Bus stop - Route 2 ■ Bus stop - Route 3 ■ Bus stop - Route 4 ■ Bus stop - Route 5 ■ Bus stop - Route 7 — BNSF railroad
--	---	--

0 0.5 1 Miles

0 1 2 Kilometers

Walking distance - based on walking speed of 3 mph

0 15 30 Minutes

Bicycling distance - based on riding speed of 10 mph

0 5 10 Minutes

NORTH

Scale 1:22,000
1 inch = 0.35 miles | 0.56 km

Produced by
City of Flagstaff
211 West Aspen Avenue
Flagstaff, Arizona 86001

928.226.4850
www.flagstaff.az.gov

Printing underwritten by

**BlueCross
BlueShield
of Arizona**

An Independent Licensee of the Blue Cross and Blue Shield Association

FSC
Mixed Sources
Product group from well-managed
forests and other controlled sources
www.fsc.org
Cert no. COC-1130
© 1996 Forest Stewardship Council

Printed May 2009