

**LEGEND**

	Visitor Center		Restrooms
	Amphitheater		Scenic Overlook
	Group Picnic Area		Trailhead
	Parking		Concrete Surface Trail
	Picnic Area		Natural Surface Trail

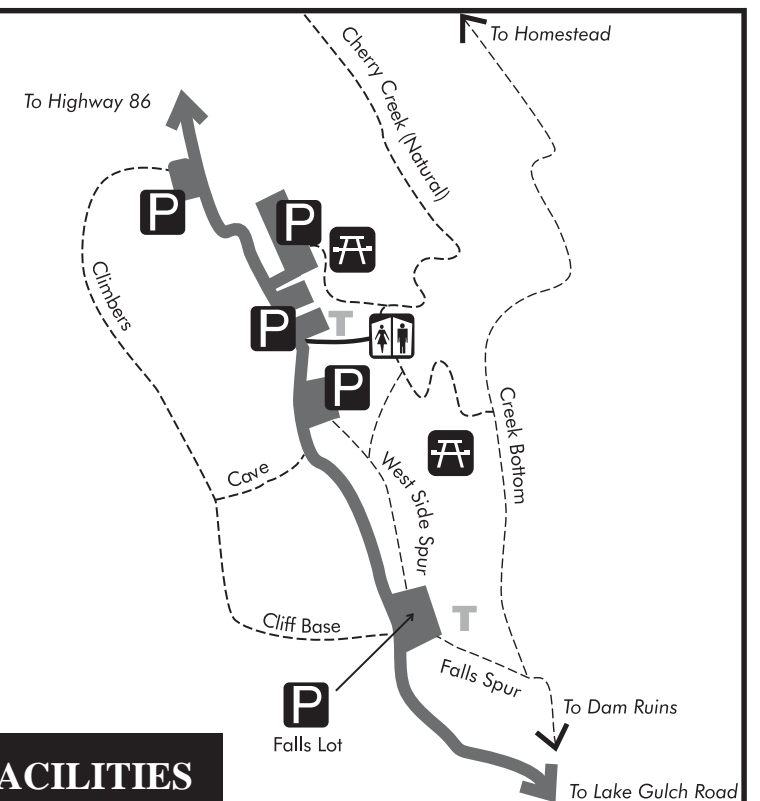
**REGULATIONS**

- Ground fires are prohibited (cook stoves and self-contained grills are allowed).
- Vehicles must remain on designated roadways.
- Pets must be on a leash not exceeding six feet in length. Dispose of pet waste in garbage.
- Firearms are prohibited (no hunting).
- Camping is prohibited.
- Gathering of artifacts, vegetation and timber is prohibited.
- Only 3.2 alcohol is allowed.

A complete copy of park regulations is available at the entrance station.

**FACILITIES**

Facilities on the east side include a Visitor Center, a spectacular handicap accessible Canyon View Nature Trail, 12 miles of hiking trails, flush toilets, picnic areas, as well as a group picnic area. Most facilities on the east side of the park are accessible and barrier free. The east gate is open at 8:00 a.m. daily. West side facilities include parking, one pit toilet and 20 picnic tables. Parking at the ruins of the dam is prohibited. For more information call (303) 688-5242.



**WEST FACILITIES**

Castlewood Canyon State Park offers splendid opportunities for hiking, picnicking, rock climbing, sight-seeing, photography and nature study. The park preserves 2,303 acres of the ecologically unique Black Forest region of Colorado. Visitors will also enjoy spectacular panoramic views of the Front Range and Pikes Peak.

Trails along the Cherry Creek wind past the ruins of the Castlewood Dam (circa 1890). Exhibits and a slide show in the Visitor Center retell the dramatic events of August 3, 1933, when the dam broke and caused the second worst flood in Denver's history.

**ACTIVITIES**

From 8:00 a.m. to sunset, Castlewood Canyon State Park is open for: sightseeing, picnicking, hiking, photography, nature study and technical rock climbing.

**Hiking and trail use:**

- Please stay on designated trails.
- Mountain bike use is restricted to roads and Cherry Creek Regional Trail.
- Horseback riding is only permitted on the Cherry Creek Regional Trail.
- Pets must be kept on a leash no longer than six feet. Pet waste must be disposed of in garbage can.
- Pets are not permitted on the East Canyon Trail

**Rock climbing:**

- The installation of bolts and fixed protection is prohibited.
- Please use designated trails for access.
- Climbing and bouldering are not permitted in the East Canyon Preservation Area.

Like all of us, Castlewood Canyon State Park needs friends too! The Friends of Castlewood Canyon State Park is a non-profit group that raises funds for special projects and provides support in many ways. Their work enhances the experience of every visitor and helps protect and preserve this special place.

Like to join us? Applications for membership are available at the Park Visitor Center or by visiting [www.parks.state.co.us](http://www.parks.state.co.us)

**PASSES AND PERMITS**

All visitors entering Castlewood Canyon State Park are required to display a current Colorado State Parks' Pass, issued by vehicle, on their auto windshield. A **daily pass** is valid from the day purchased until noon the following day. An **annual pass** is valid at any Colorado State Park. For annual pass holders who own more than one vehicle, multiple passes are available at a reduced fee. Passes are available at main park entrances and self-service dispensers. Colorado disabled veterans displaying Colorado Disabled Veteran (DV) license plates are admitted free without a pass. Colorado residents 64 years of age or older qualify for a special **Aspen Leaf** annual pass, available at a discounted rate.

**DIRECTIONS**

To get to Castlewood Canyon State Park, take I-25 to Castle Rock. Take the Founders Parkway exit on Hwy 86. Take Hwy 86 into Franktown. At the stoplight turn south to Hwy 83. Go five miles to the park entrance.

There are two entrances to Castlewood Canyon State Park. The main (or east) entrance is off of Hwy 83, five miles south of Franktown. The east entrance facilities include a visitor center, flush restrooms, event facilities, picnic areas with grills and a paved roadway.

The west entrance is accessed from Castlewood Canyon Road off of Hwy 86. The west entrance is a less-developed portion of the park, including a gravel road, gravel parking lots, a few picnic tables and vault toilets.



**Castlewood Canyon State Park**  
 2989 South Highway 83  
 Franktown, CO 80116  
 (303) 688-5242  
 E-mail: [castlewood.canyon@state.co.us](mailto:castlewood.canyon@state.co.us)

For new and current information on all Colorado State Parks visit us online at [www.parks.state.co.us](http://www.parks.state.co.us).



Any person who is excluded from participation in, denied the benefits of, or otherwise subjected to discrimination under any program of the Colorado Division of Parks and Outdoor Recreation on the grounds of race, creed, color, sex, age, handicap, or national origin, should contact the park manager, the nearest local regional office, the Division headquarters in Denver, Colorado - telephone (303) 866-3437 - or the National Park Service, P.O. Box 37127, Washington, D.C. 20013-7127. CSP-CAST-28M-5/08

**CASTLEWOOD CANYON**

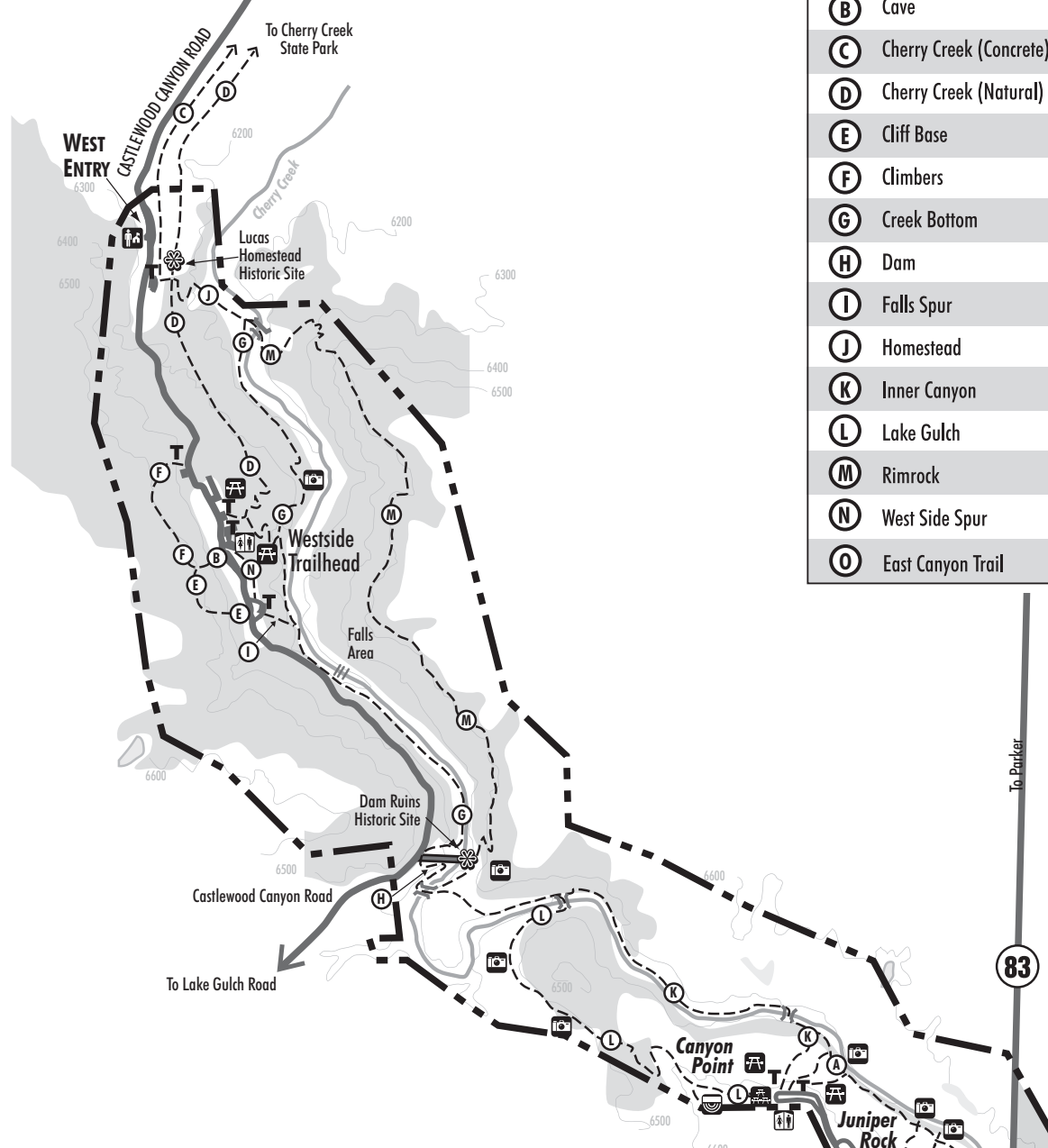
Visit all your Colorado State Parks at [www.parks.state.co.us](http://www.parks.state.co.us)

# CASTLEWOOD CANYON STATE PARK

# Trail Map

To Castle Rock 86 FRANKTOWN

Trail Name	Length	Difficulty	Usage
<b>A</b> Canyon View Nature Trail	1.2 mi.	Easy	
<b>B</b> Cave	.14 mi.	Difficult	
<b>C</b> Cherry Creek (Concrete)	.24 mi.	Easy	
<b>D</b> Cherry Creek (Natural)	1.0 mi.	Moderate	
<b>E</b> Cliff Base	.18 mi.	Difficult	
<b>F</b> Climbers	.14 mi.	Difficult	
<b>G</b> Creek Bottom	1.7 mi.	Moderate	
<b>H</b> Dam	.35 mi.	Moderate	
<b>I</b> Falls Spur	.17 mi.	Moderate	
<b>J</b> Homestead	.35 mi.	Easy	
<b>K</b> Inner Canyon	1.16 mi.	Moderate	
<b>L</b> Lake Gulch	0.8 mi.	Moderate	
<b>M</b> Rimrock	2.14 mi.	Moderate to Difficult	
<b>N</b> West Side Spur	.06 mi.	Moderate	
<b>O</b> East Canyon Trail	4.0 mi.	Moderate	



**East Canyon Preservation Area**

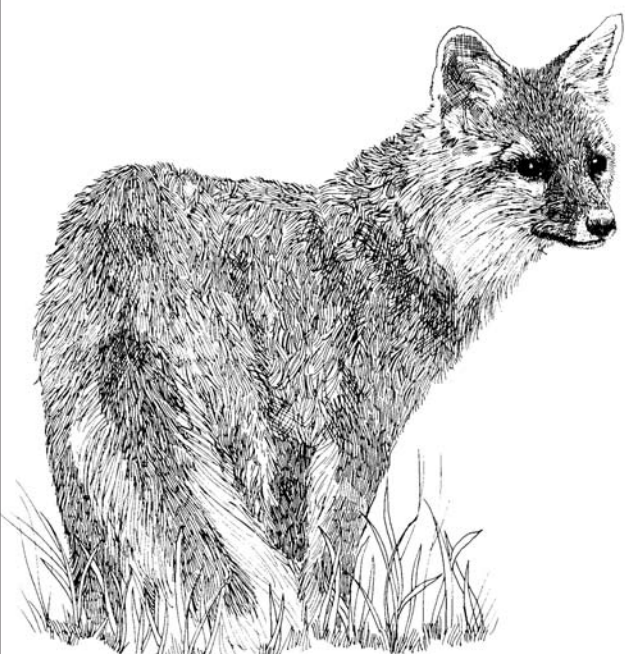
Due to the fragile nature of this area, the following regulations are strictly enforced:

- Visitors must remain on the designated trail.
- No dogs or other pets are permitted.
- No climbing, traversing or rappelling on or from rock formations.
- Seasonal closures exist.

**Loop Hikes**

- Combine Lake Gulch Trail **L** with Inner Canyon Trail **K** for a 2 mile loop starting at Canyon Point Parking lot.
- Combine Creek Bottom Trail with Rimrock trail for a 4 mile loop starting at Westside Trailhead parking lot.
- Connect the 2 mile loop with the 4 mile loop via the Dam trail to create a 6 mile loop.

Please recycle this brochure in the provided boxes.



**LEGEND**

	Visitor Center
	Amphitheater
	Bridge
	Entrance Station
	Group Picnic Area
	Historic Site
	Picnic Area
	Restrooms
	Scenic Overlook
	Trailhead
	Closed to the Public
	Trail

