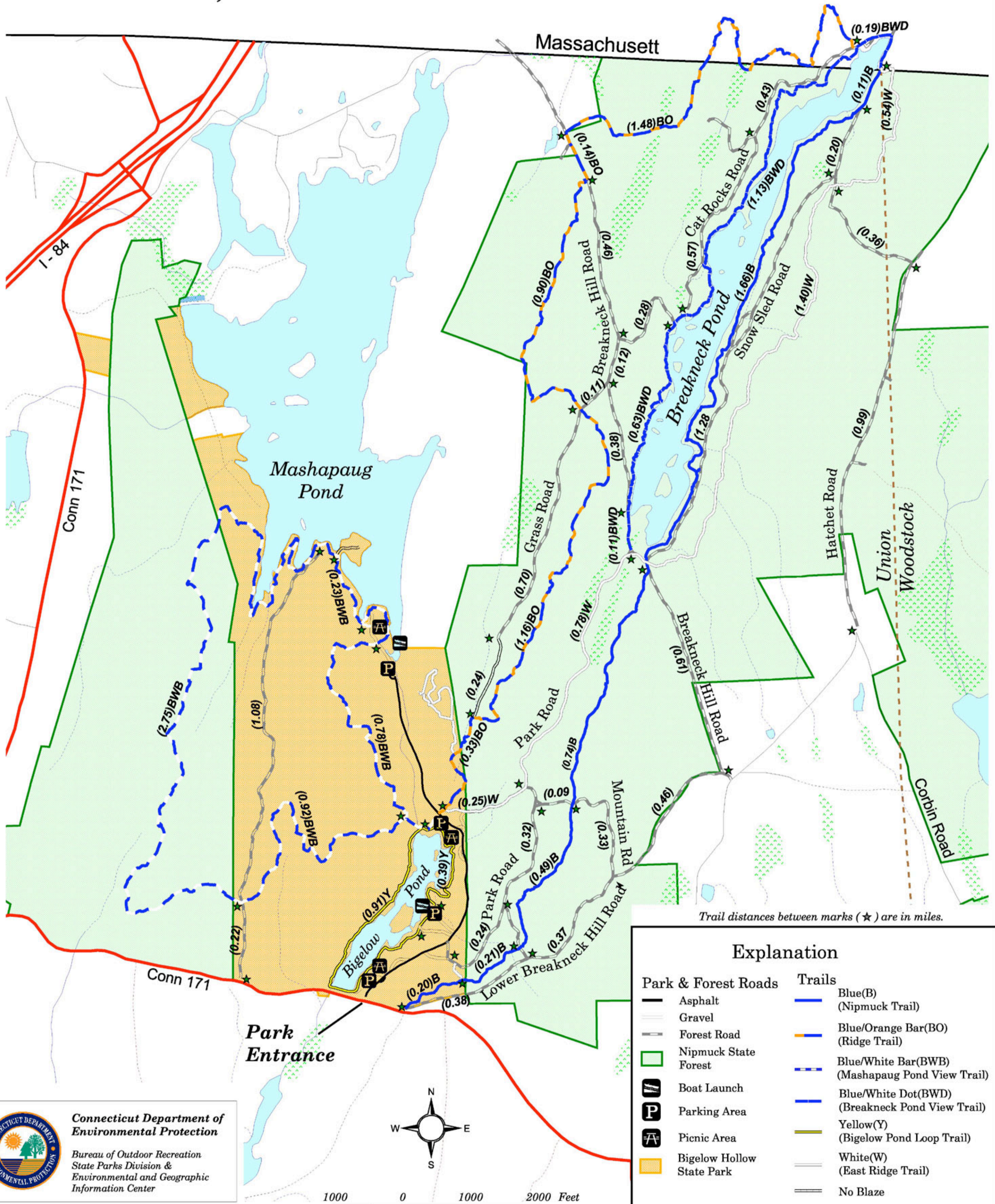


Nipmuck State Forest Bigelow Hollow State Park

Union, Connecticut




Trail distances between marks (★) are in miles.

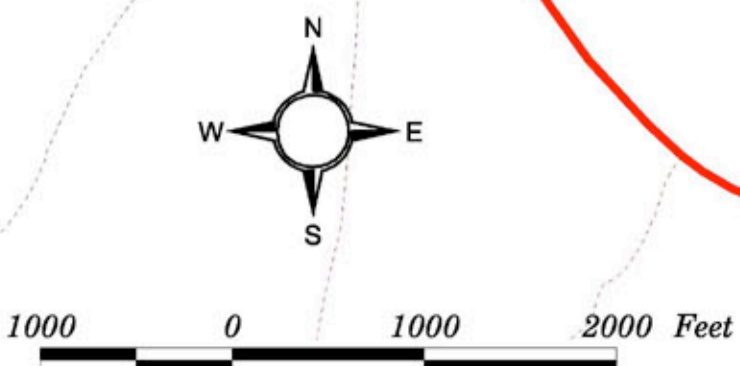
Explanation

- | | |
|--------------------------------|--|
| Park & Forest Roads | Trails |
| Asphalt | Blue(B) (Nipmuck Trail) |
| Gravel | Blue/Orange Bar(BO) (Ridge Trail) |
| Forest Road | Blue/White Bar(BWB) (Mashapaug Pond View Trail) |
| Nipmuck State Forest | Blue/White Dot(BWD) (Breakneck Pond View Trail) |
| Boat Launch | Yellow(Y) (Bigelow Pond Loop Trail) |
| Parking Area | White(W) (East Ridge Trail) |
| Picnic Area | No Blaze |
| Bigelow Hollow State Park | |

Note: The boundaries of State-owned properties as shown on this map are approximate.



Connecticut Department of Environmental Protection
Bureau of Outdoor Recreation
State Parks Division &
Environmental and Geographic Information Center



Map Date - December 2003