

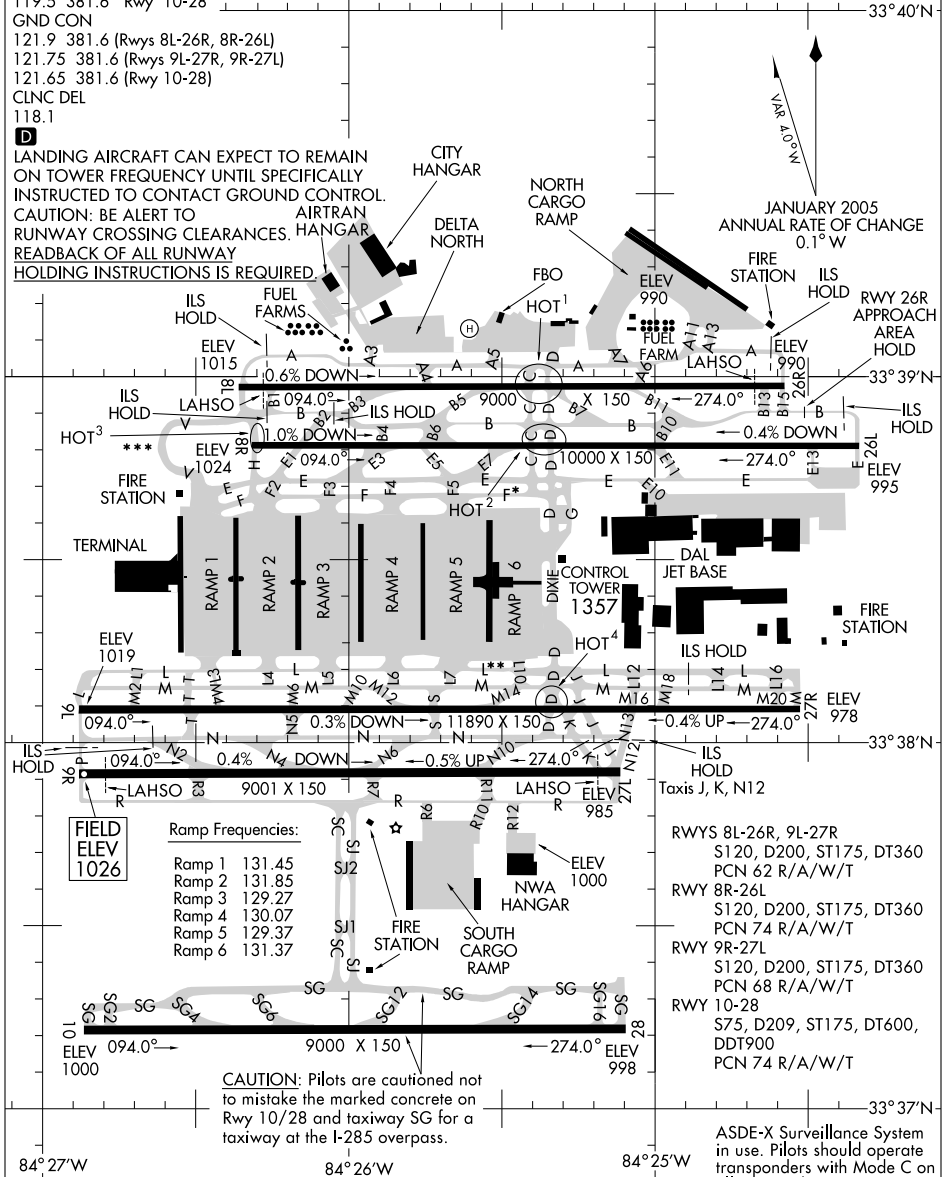
AIRPORT DIAGRAM

ATLANTA/ HARTSFIELD - JACKSON ATLANTA INTL (ATL)
AL-26 (FAA) ATLANTA, GEORGIA

ATIS ARR 119.65
DEP 125.55
ATLANTA TOWER
119.1 381.6 Rwy 8L-26R
125.325 381.6 Rwy 8R-26L
119.3 381.6 Rwy 9R-27L
123.85 381.6 Rwy 9L-27R
119.5 381.6 Rwy 10-28
GND CON
121.9 381.6 (Rwys 8L-26R, 8R-26L)
121.75 381.6 (Rwys 9L-27R, 9R-27L)
121.65 381.6 (Rwy 10-28)
CLNC DEL
118.1

- *Group VI aircraft are restricted from using Taxiway Foxtrot east of Ramp 5 North to the west side of Taxiway Charlie.
- **Group VI aircraft are restricted from using Taxiway Lima east of Ramp 5 South to west of Ramp 6 South.
- ***Aircraft with wingspan greater than 171' are restricted from using Taxiway Victor.

D
LANDING AIRCRAFT CAN EXPECT TO REMAIN ON TOWER FREQUENCY UNTIL SPECIFICALLY INSTRUCTED TO CONTACT GROUND CONTROL.
CAUTION: BE ALERT TO RUNWAY CROSSING CLEARANCES.
READBACK OF ALL RUNWAY HOLDING INSTRUCTIONS IS REQUIRED.



SE-4, 01 JUL 2010 to 29 JUL 2010

SE-4, 01 JUL 2010 to 29 JUL 2010

AIRPORT DIAGRAM

ATLANTA, GEORGIA
ATLANTA/ HARTSFIELD - JACKSON ATLANTA INTL (ATL)